

2021-03-25: Best Practices for Fourth Year Career Advising

Topic and Questions courtesy of the Association of Professors of Gynecology & Obstetrics

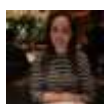
The following links were shared during the chat:

- [A Career Exploration Program: An Effective Alternative to the Traditional Use of Faculty Advisors - PubMed \(nih.gov\)](#)
- ['Speed advising' for medical students applying to residency programs: an efficient supplement to traditional advising - PubMed \(nih.gov\)](#)
- [Career advising in family medicine: a theoretical framework for structuring the medical student/faculty advisor interview - PubMed \(nih.gov\)](#)
- ["Flipped classroom" for academic and career advising: an innovative technique for medical student advising - PubMed \(nih.gov\)](#)
- [Home | Careers in Medicine \(aamc.org\)](#)
- [APGO Effective Student Advising Series - APGO](#)
- [Texas STAR: Medical School Student Affairs - UT Southwestern, Dallas, TX](#)
- [Main Residency Match Data and Reports - The Match, National Resident Matching Program \(nrmp.org\)](#)



MedEd Chat (hosted by ACE) [@MedEdChat](#) 8 hours ago

TOPIC 1: Who are the stakeholders in 4th year advising? How should faculty stay up to date about advising? [#MedEdChat](#) [#meded](#)



Shireen Madani Sims, MD [@UFDOC](#) 8 hours ago

[@MedEdChat](#) T1- So imp't to be up to date! Avoid out of date advice! [#mededchat](#)



Gary Beck Dallaghan [@GLBDallaghan](#) 8 hours ago

[@UFDOC](#) [@MedEdChat](#) T1 How do you propose faculty and advisors do that? [#MedEdChat](#)



Gary Beck Dallaghan [@GLBDallaghan](#) 8 hours ago

T1 The [#medstudents](#) are the primary stakeholder when it comes to 4th year advising. It could impact their entire future! [#MedEdChat](#)



Dhruv Srinivasachar MD (soon) [@TheRealDSrini](#) 8 hours ago

[@MedEdChat](#) A1-Students absolutely should be stakeholders in 4th year advising. Advising should be for the benefit of a student to get them into the residency that fits them best. [#MedEdChat](#)



Lonika #wearyourmask Sood [@sood_lonika](#) 8 hours ago

Chiming in late here.. [#MedEdChat](#)



Alliance4ClinEd [@Alliance4ClinEd](#) 8 hours ago

T1 This theoretical framework for advising looks promising to help advisors in their role. <https://t.co/sOZFzLnMZr> [#MedEdChat](#)



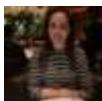
MedEd Chat (hosted by ACE) [@MedEdChat](#) 8 hours ago

RT [@Alliance4ClinEd](#): T1 This theoretical framework for advising looks promising to help advisors in their role. <https://t.co/sOZFzLnMZr> #Me...



Lonika #wearyourmask Sood [@sood_lonika](#) 8 hours ago

A1: students, faculty, patients, program. It's a team! Networking, talking to colleagues [#MedEdChat](#)



Shireen Madani Sims, MD [@UFDOC](#) 8 hours ago

[@GLBDallaghan](#) T1- agree but students don't know if the advice they are getting from advisors is good or not! [#mededchat](#)



N Etezadi [@etez_n](#) 8 hours ago

[@MedEdChat](#) T1 important to have timely debriefs of most recent match outcomes and review pearls of wisdom for application strategies with faculty prior to the start of each residency app cycle [#MedEdChat](#)



Alliance4ClinEd [@Alliance4ClinEd](#) 8 hours ago

T1 Great line! "... [#facdev](#) for all clinical advisors to ensure that they have current information regarding both the curriculum and Match process" <https://t.co/h46pZSEaKC> [#MedEdChat](#)



MedEd Chat (hosted by ACE) [@MedEdChat](#) 8 hours ago

RT [@Alliance4ClinEd](#): T1 Great line! "... [#facdev](#) for all clinical advisors to ensure that they have current information regarding both the...



Alexander Rand [@AlexanderRandMD](#) 8 hours ago

A1: Students, deans, and faculty mentors are the stakeholders in fourth year advising. Data from national Matching trends are important to watch, particularly the NRMP documents. There's a balance to be struck between blind support and crushing dreams. [#MedEdChat](#)



Kelly Stazyk [@kellystazyk](#) 8 hours ago

Kelly here from the Careers in Medicine program at the AAMC. Tweets are my own. [#mededchat](#)



MedEd Chat (hosted by ACE) [@MedEdChat](#) 8 hours ago

[@kellystazyk](#) Thank you for joining the [#MedEdChat](#) tonight!



Alliance4ClinEd [@Alliance4ClinEd](#) 8 hours ago

RT [@AlexanderRandMD](#): A1: Students, deans, and faculty mentors are the stakeholders in fourth year advising. Data from national Matching tr...



Kate Klein @kklein558 hours ago
[@MedEdChat](#) [#MedEdChat](#)



MedEdBot @MedEdBot8 hours ago
RT [@MedEdChat](#): The [#mededchat](#) topic & questions will be announced in a moment...for now, please introduce yourselves [#meded](#)



MedEdBot @MedEdBot8 hours ago
RT [@MedEdChat](#): We will assume that all of your tweets during [#mededchat](#) are your own during this hour unless otherwise stated [#meded](#)



MedEdBot @MedEdBot8 hours ago
RT [@MedEdChat](#): T1 about to come up in a few moments [#meded](#) [#mededchat](#)



MedEdBot @MedEdBot8 hours ago
RT [@MedEdChat](#): TOPIC 1: Who are the stakeholders in 4th year advising? How should faculty stay up to date about advising? [#MedEdChat](#) [#meded](#)



Jill M Sutton @JillMSutton20008 hours ago
T1 The Student, The Residency Programs, The Advisor, The Home Institution and their Future
Patients [#MedEdChat](#)



Gary Beck Dallaghan @GLBDallaghan8 hours ago
T1 When I worked more with students, I always referred them to Careers in Medicine. Do others refer students to their site regularly? <https://t.co/bj11m2GnhZ> [#MedEdChat](#)



MedEd Chat (hosted by ACE) @MedEdChat8 hours ago
TOPIC 2: How should faculty stay up to date about advising? [#MedEdChat](#) [#meded](#)



Kelly Stazyk @kellystazyk8 hours ago
[@GLBDallaghan](#) Thanks for the plug! (This was not a paid endorsement!) [#mededchat](#)



Gary Beck Dallaghan @GLBDallaghan8 hours ago
T2 Some of the suggestions of looking at Match data is good. We used to do post Match surveys to get input from [#medstudents](#) [#MedEdChat](#)



N Etezadi [@etez](#) n8 hours ago

[@MedEdChat](#) It is helpful when school leadership emphasizes the importance of faculty participating in advising, as well! [#MedEdChat](#)



Gary Beck Dallaghan [@GLBDallaghan](#)8 hours ago

[@kellystazyk](#) T1 No....but it should be. Over the years I've had students tell me how good the site is....not just in exploring careers but exploring themselves. [#MedEdChat](#)



MedEd Chat (hosted by ACE) [@MedEdChat](#)8 hours ago

[@etez](#) n Can you explain more? Do you feel school admin does not recognize the importance of career advising? [#MedEdChat](#)



MedEd Chat (hosted by ACE) [@MedEdChat](#)8 hours ago

RT Shireen Madani Sims, MD [@UFDOC](#) Replying to [@MedEdChat](#) [@apgonews](#) has wonderful resource to distribute to faulty career advisors <https://t.co/iNNsl4vbvu> [#MedEdChat](#)



N Etezadi [@etez](#) n8 hours ago

[@MedEdChat](#) T2 Knowing which resources to use (eg APGO) and what different websites offer to students when they start to search programs is helpful. NRMP data and contact with Student Affairs office is important. [#MedEdChat](#)



Dhruv Srinivasachar MD (soon) [@TheRealDSrini](#)8 hours ago

[@GLBDallaghan](#) TEXAS STAR is a useful central repository for Post-match statistics! [#MedEdChat](#)



Jill M Sutton [@JillMSutton2008](#) hours ago

T2 Faculty Development at your institution and at National Meetings. Leaning on available resources from your specialty's educational association is key for advising along with utilizing data from NRMP Charting Outcomes for the Match <https://t.co/ouvIhLHcdt> [@apgonews](#) [#MedEdChat](#)



Kelly Stazyk [@kellystazyk](#)8 hours ago

[@UFDOC](#) [@GLBDallaghan](#) Yes! And how do you help students evaluate who is giving them advice they can trust and what information and advice is "trustable"? [#mededchat](#)



Gary Beck Dallaghan [@GLBDallaghan](#)8 hours ago

[@TheRealDSrini](#) Here's the link for it: <https://t.co/Y7HyiEVIr> [#MedEdChat](#)



MedEd Chat (hosted by ACE) [@MedEdChat](#)8 hours ago

RT [@GLBDallaghan](#): [@TheRealDSrini](#) Here's the link for it: <https://t.co/Y7HyiEVIr> [#MedEdChat](#)



MedEd Chat (hosted by ACE) [@MedEdChat8 hours ago](#)

RT [@JillMSutton2000](#): T2 Faculty Development at your institution and at National Meetings. Leaning on available resources from your specialt...



MedEd Chat (hosted by ACE) [@MedEdChat8 hours ago](#)

RT Sue M Cox [@susanmcox3](#) Replying to [@GLBDallaghan](#) We use match outcome data to guide students to appropriate programs [#MedEdChat](#)



Gary Beck Dallaghan [@GLBDallaghan8 hours ago](#)

T2 How honest are career advisors allowed to be? If you see that a student's credentials are not a good fit....do you tell them and potentially crush a dream? [#MedEdChat](#)



Elise Everett [@EliseEverett158 hours ago](#)

RT [@MedEdChat](#): RT Shireen Madani Sims, MD [@UFDOC](#) Replying to [@MedEdChat](#) [@apgonews](#) has wonderful resource to distribute to faulty career adv...



Kelly Stazyk [@kellystazyk8 hours ago](#)

[@GLBDallaghan](#) That's so great to hear! Thank you! We hear that many students don't like the self-exploration, but it's crucial to being self-aware and finding true fit with a specialty and training programs. [#mededchat](#)



Jasminka Criley MD, FACP, FHM [@criley_md8 hours ago](#)

[@TheRealDSrini](#) [@MedEdChat](#) Absolutely. There are so many variables that go into the equation of the best fit. Students know themselves best and their overall situation. Advisors should guide but might not always be right. [#MedEdChat](#)



MedEd Chat (hosted by ACE) [@MedEdChat8 hours ago](#)

TOPIC 3: What is the role of the CD in educating faculty about advising? [#MedEdChat](#) [#meded](#)



MedEd Chat (hosted by ACE) [@MedEdChat8 hours ago](#)

Just a reminder when responding to tweets to use [#MedEdChat](#) so everyone can read your reply!



Kelly Stazyk [@kellystazyk8 hours ago](#)

[@GLBDallaghan](#) Honest, but allow student to assume whatever level of risk they are comfortable with. [#mededchat](#)



Jasminka Criley MD, FACP, FHM [@criley_md8 hours ago](#)

[@MedEdChat](#) [@susanmcox3](#) [@GLBDallaghan](#) . [@MedEdChat](#) What do you define as "appropriate"? [#MedEdChat](#)



MedEd Chat (hosted by ACE) [@MedEdChat](#) 8 hours ago

RT [@kellystazyk](#): [@GLBDallaghan](#) Honest, but allow student to assume whatever level of risk they are comfortable with. [#mededchat](#)



MedEd Chat (hosted by ACE) [@MedEdChat](#) 8 hours ago

RT Shireen Madani Sims, MD [@UFDOC](#) Replying to [@MedEdChat](#) T3- CDs and PDs need to lead the charge and stay in-the-know [#MedEdChat](#)



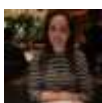
N Etezadi [@etez_n](#) 8 hours ago

[@MedEdChat](#) T3 It seems most CDs by default have become the specialty advisors for their field. As such and given that they have access to resources from APGO, they can be instrumental in faculty development. [#MedEdchat](#)



MedEd Chat (hosted by ACE) [@MedEdChat](#) 8 hours ago

RT Sue M Cox [@susanmcox3](#) Replying to [@GLBDallaghan](#) T2 You should be painfully honest . Will keep the student out of SOAP if they listen to you their advisor [#MedEdChat](#)



Shireen Madani Sims, MD [@UFDOC](#) 8 hours ago

[@etez_n](#) [@MedEdChat](#) This is so true! [#mededchat](#)



Jasminka Criley MD, FACP, FHM [@criley_md](#) 8 hours ago

[@MedEdChat](#) Lead by example. Stay informed. [#mededchat](#) [#MedEd](#)



N Etezadi [@etez_n](#) 8 hours ago

[@MedEdChat](#) T3 CDs are also the point person that students often first mention their specialty interest to. [#MedEdChat](#)



Alliance4ClinEd [@Alliance4ClinEd](#) 8 hours ago

[@etez_n](#) [@MedEdChat](#) T3 Have you published or promoted these resources? Other specialties may be able to learn from them [#MedEdChat](#)



Jill M Sutton [@JillMSutton2000](#) 8 hours ago

[@MedEdChat](#) [#MedEdChat](#) As a CD, advising fourth year students through the Match is one of my most favorite roles as an educator!



Kelly Stazyk [@kellystazyk](#) 8 hours ago

Agreed! [#mededchat](#)



Shireen Madani Sims, MD [@UFDOC](#) 8 hours ago

[@JillMSutton2000](#) [@MedEdChat](#) Me too [@JillMSutton2000](#) !! [#mededchat](#)



N Etezadi @etez_n8 hours ago
 @MedEdChat @susanmcox3 @GLBDallaghan Agree @susanmcox3, relationship b/w advisee and advisor has to be such that concerns can be addressed and so a successful strategy for application can be worked on #MedEdChat



Jasminka Criley MD, FACP, FHM @criley_md8 hours ago
 @GLBDallaghan Is self assessment RIASEC based or using another psychometric? #MedEdChat #MedEd #careers #indeliblemd



Lonika #wearyourmask Sood @sood_lonika8 hours ago
 @MedEdChat A3: we collaborate very closely with the office of career advising so we can share resources #mededchat



Jill M Sutton @JillMSutton20008 hours ago
 #MedEdChat



MedEd Chat (hosted by ACE) @MedEdChat8 hours ago
 TOPIC 4: What do you incorporate in your 4th year advising? #MedEdChat #meded



Katherine Chretien @MotherinMed8 hours ago
 @GLBDallaghan T2: They need to know the long odds. But they can still go for their dreams, just need a well considered back-up plan. Sometimes long-shot dreams come true, too. #mededchat



Lonika #wearyourmask Sood @sood_lonika8 hours ago
 A3: also love that @AAIMOnline is made up both of CDs and PDs... #MedEdChat



Jill M Sutton @JillMSutton20008 hours ago
 @UFDOC @MedEdChat So rewarding! Match day is my most favorite day in the academic year!
 Seeing our learners realize their success brings so much joy! #MedEdChat



Kelly Stazyk @kellystazyk8 hours ago
 Yes! #mededchat



Alliance4ClinEd @Alliance4ClinEd7 hours ago
 T4 These two articles offered some interesting approaches to career advising <https://t.co/ooAHNJhM6B> & <https://t.co/fHa0cQc6pc> #MedEdChat



MedEd Chat (hosted by ACE) @MedEdChat7 hours ago
 RT @Alliance4ClinEd: T4 These two articles offered some interesting approaches to career advising <https://t.co/ooAHNJhM6B> & <https://t.co/ooAHNJhM6B>



Jill M Sutton @JillMSutton20007 hours ago
[@TammySonn1203](#) [@MedEdChat](#) So true! [#MedEdChat](#)



N Etezadi @etez_n7 hours ago
[@MedEdChat](#) T4 workshops for PS/CV/Interview prep. Individual PS, application strategy review, constant communication with advisees [#MedEdChat](#)



MedEd Chat (hosted by ACE) @MedEdChat7 hours ago
RT [@etez_n](#): [@MedEdChat](#) T4 workshops for PS/CV/Interview prep. Individual PS, application strategy review, constant communication with advis...



Jasminka Criley MD, FACP, FHM @criley_md7 hours ago
[@JillMSutton2000](#) [@MedEdChat](#) Yes. It is wonderful! As long as all your students end up getting their happy choices ... [#MedEdChat](#) [#MedEd](#)



Jill M Sutton @JillMSutton20007 hours ago
[@Alliance4ClinEd](#) Thank you for sharing! [#MedEdChat](#)



Jill M Sutton @JillMSutton20007 hours ago
[@MedEdChat](#) [@UFDOC](#) [@apgonews](#) So Awesome! So great to share this right here! [#MedEdChat](#)



Shireen Madani Sims, MD @UFDOC7 hours ago
[@etez_n](#) [@MedEdChat](#) All of this! [#mededchat](#)



Jasminka Criley MD, FACP, FHM @criley_md7 hours ago
[@kellystazyk](#) [@GLBDallaghan](#) . [@kellystazyk](#) Do you know what is being used in self assessment? Is it RIASEC based or is assessment using different theory? I am deeply involved in [#careerexploration](#) projects & would love to learn more about [@AAMCtoday](#) [#carrers](#) in [#medicine](#) [#MedEdChat](#) [#MedEd](#) [#indeliblemd](#)



Kelly Stazyk @kellystazyk7 hours ago
[@criley_md](#) [@GLBDallaghan](#) [@AAMCtoday](#) Awesome! I know some. In CiM, we have 5 self-assessments. Why don't you email me directly and we'll connect? [Kstazyk@aamc.org](#) [#mededchat](#)



Jasminka Criley MD, FACP, FHM @criley_md7 hours ago
[@Alliance4ClinEd](#) . [@Alliance4ClinEd](#) Thanks for the articles. [#K12](#) déjà vu [#mededchat](#) [#MedEd](#)



MedEd Chat (hosted by ACE) @MedEdChat7 hours ago
We have about 5 more minutes left in our discussion. Please feel free to give some final thoughts [#meded](#) [#mededchat](#)



Shireen Madani Sims, MD [@UFDOC7](#) hours ago

[@MedEdChat](#) CDs have great opp for fac development, mentoring, celebration! [#bestjob](#) [#mededchat](#)



Kelly Stazyk [@kellystazyk7](#) hours ago

It's so great to hear from all you enthusiastic and passionate med student career advisors! ♥ Thank you for all you do! [#mededchat](#)



Jasminka Criley MD, FACP, FHM [@criley_md7](#) hours ago

[@kellystazyk](#) [@GLBDallaghan](#) [@AAMCtoday](#) Fantastic! Emailing now. [#MedEdChat](#) [#MedEd](#)



Jill M Sutton [@JillMSutton20007](#) hours ago

[@TammySonn1203](#) [@MedEdChat](#) Love the way you advise your learners!! [#MedEdChat](#)



Tammy [@TammySonn12037](#) hours ago

[@MedEdChat](#) I have always appreciated are national mtgs that give great updates and tips to share with others. Thanks APGO! [#mededchat](#)



Jasminka Criley MD, FACP, FHM [@criley_md7](#) hours ago

[@kellystazyk](#) [@GLBDallaghan](#) [@AAMCtoday](#) . [@kellystazyk](#) And btw --- very happy to hear there are

different types of self assessment [#mededchat](#) [#MedEd](#)



MedEd Chat (hosted by ACE) [@MedEdChat7](#) hours ago

That's a wrap...I will post the [#mededchat](#) transcript tomorrow morning on <https://t.co/mJivoK9NyX>. Thanks everyone for participating! [#meded](#)



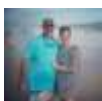
MedEd Chat (hosted by ACE) [@MedEdChat7](#) hours ago

Join us again next week at 9 pm Thursday. Don't forget to suggest topics by DM or email [#meded](#) [#mededchat](#)



Jill M Sutton [@JillMSutton20007](#) hours ago

[@UFDOC](#) [@MedEdChat](#) [#WehavethebestJob](#) [#MedEdChat](#)



Jill M Sutton [@JillMSutton20007](#) hours ago

[@kellystazyk](#) Likewise! Thank you for sharing with us! [#MedEdChat](#)



Jasminka Criley MD, FACP, FHM [@criley_md7](#) hours ago

[@AlexanderRandMD](#) Well said. [#mededchat](#) [#MedEd](#) [#indeliblemd](#)



MedEdBot @MedEdBot7 hours ago

RT @MedEdChat: That's a wrap...I will post the #mededchat transcript tomorrow morning on <https://t.co/mJivoK9NyX>. Thanks everyone for parti...



MedEdBot @MedEdBot7 hours ago

RT @MedEdChat: Join us again next week at 9 pm Thursday. Don't forget to suggest topics by DM or email #meded #mededchat



Melissa Upton @MelissaUpton76 hours ago

Always have plan A, plan B, plan C.



STEM Equals Project

@STEMEquals2 hours ago

High Schooler Dasia Taylor Invented Color-Changing Sutures to Detect Infection <https://t.co/gZkBEa49Pc> #WomenInSTEM #BlackInSTEM #DiversityInSTEM #STEM #Innovation #MedEdChat



FemTech_ @femtech 2 hours ago

RT @STEMEquals: High Schooler Dasia Taylor Invented Color-Changing Sutures to Detect Infection <https://t.co/gZkBEa49Pc> #WomenInSTEM #Blac...



STEM Bot Ai @stem_ai2 hours ago

RT @STEMEquals: High Schooler Dasia Taylor Invented Color-Changing Sutures to Detect Infection <https://t.co/gZkBEa49Pc> #WomenInSTEM #Blac...

The #MedEdChat Influencers

Top 10 Influential



[@MedEdChat](#) 100



[@GLBDallaghan](#) 99



[@kellystazyk](#) 84



[@TheRealDSrini](#) 70



[@JillMSutton2000](#) 67



[@Alliance4ClinEd](#) 65



[@UFDOC](#) 53



[@susanmcox3](#) 52



[@AlexanderRandMD](#) 46



[@AAMCtoday](#) 46

Prolific Tweeters



[@MedEdChat](#) 21



[@JillMSutton2000](#) 11



[@criley_md](#) 10



[@kellystazyk](#) 9



[@GLBDallaghan](#) 7



[@etez_n](#) 7

 [@MedEdBot](#) 6

 [@UFDOC](#) 6

 [@Alliance4ClinEd](#) 5

 [@sood_lonika](#) 4

Highest Impressions

 [@MedEdChat](#) 188.1K

 [@femtech_](#) 20.2K

 [@MedEdBot](#) 16.9K

 [@GLBDallaghan](#) 12.0K

 [@MotherinMed](#) 9.1K

 [@criley_md](#) 3.5K

 [@Alliance4ClinEd](#) 3.3K

 [@MelissaUpton7](#) 3.2K

 [@sood_lonika](#) 3.0K

 [@stem_ai](#) 2.8K

The Numbers

270.704K Impressions

97 Tweets

20 Participants

12 Avg Tweets/Hour

5 Avg Tweets/Participant

Twitter data from the [#MedEdChat](#) hashtag from Thu, March 25th 2021, 9:05PM to Fri, March 26th 2021, 5:10AM (America/New_York) – Symplur.